



**WELCOME!!**

**Please take a seat in the  
center of the room!**

---



***Welcome to ASME!***

---

# Membership

What's on Tap:

Membership  
Membership Requirements  
Active Member Awards  
Twitter  
T-shirts  
Design Competition  
Industrial Events  
Outreach  
Exam File  
Academic Events  
Design Competition  
ASMEs

- Become a member!
    - Looks good on resumes
    - Meet classmates for homework
    - Fun activities
    - Exam File
  - Link through the UW-Madison ASME website
  - [www.engr.wisc.edu/studentorgs/asme](http://www.engr.wisc.edu/studentorgs/asme)
  - FREE for freshmen!!!
  - Only \$25 for sophomores through seniors
  - Membership Giveaway
-

# *New Membership Requirements!*

**What's on Tap:**

Membership  
Membership Requirements  
Active Member Awards  
Twitter  
T-shirts  
Design Competition  
Industrial Events  
Outreach  
Exam File  
Academic Events  
Design Competition  
ASMEs

**Upcoming: Active Membership Requirements!**

- Be a paid member
- Attend 2 events/semester (outside of general meetings)

**Upcoming: Officer Requirement!**

- Attend 3-5 events/semester (TBD)
- Miss no more than 2 General or Business Meetings per semester

**Opinions on the new requirements? Write them on your half sheet!**

---

# Active Member Awards

What's on Tap:

Membership

Membership Requirements

Active Member Awards

Twitter

T-shirts

Design Competition

Industrial Events

Outreach

Exam File

Academic Events

Design Competition

ASMEs

- Points will be given based on number/length of events attended
- Highest point earners will receive awards at the spring banquet
- Example: 1 pt. for general meetings, 2 points for tours, and ½ pt. for each exam given to the exam file

*Tom Pocrnich*

# *ASME Twitter*

**What's on Tap:**

Membership

Membership Requirements

Active Member Awards

Twitter

T-shirts

Design Competition

Industrial Events

Outreach

Exam File

Academic Events

Design Competition

ASMEs

- Follow ASME on Twitter!!!
- @ASMEMadison

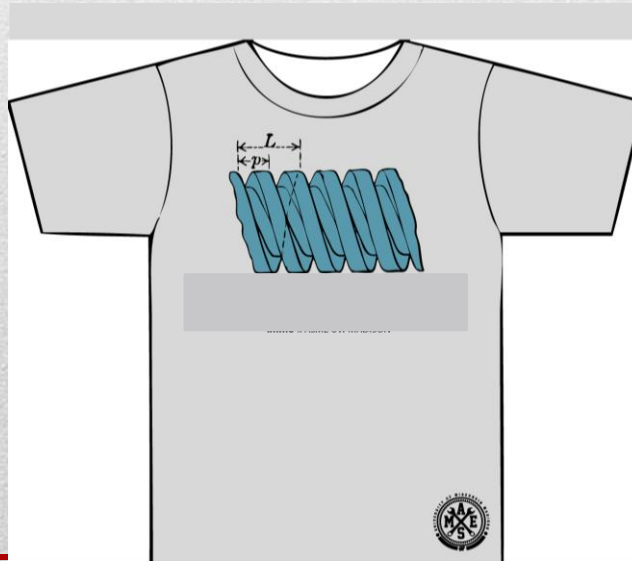


# T-Shirts

What's on Tap:

- Membership
- Membership Requirements
- Active Member Awards
- Twitter
- T-shirts
- Design Competition
- Industrial Events
- Outreach
- Exam File
- Academic Events
- Design Competition
- ASMEs

- Write on the half sheets if you would like to purchase one!
- Please include your shirt size!



*Greg Smetana and  
Jackson Cryns*

# *Design Competition*

**What's on Tap:**

Membership

Membership Requirements

Active Member Awards

Twitter

T-shirts

Design Competition

Industrial Events

Outreach

Exam File

Academic Events

Design Competition

ASMEs

- Next Meeting 11/20! (Every other Sunday!)
- Check the half-sheet if interested (even if you can't make the meeting!)



*Michael Szewczyk and  
Adam Ringstad*

# *Industrial Events*

**What's on Tap:**

Membership

Membership Requirements •

Active Member Awards

Twitter

T-shirts

Design Competition

Industrial Events

Outreach

Exam File

Academic Events

Design Competition

ASMEs

Capital Brewery Tour

THIS Friday November 11<sup>th</sup>, 5pm

Cost: \$5-\$10

Must be 21 to Attend and must preregister!

• Skana Aluminum Co. Tour

Manitowoc, WI

Friday, December 2nd (9 AM – 4 PM); transportation provided

Meet outside ASME office at 8:30 am

**CHECK THE HALFSHEETS!**

---

# *Outreach Events*

**What's on Tap:**

Membership

Membership Requirements

Active Member Awards

Twitter

T-shirts

Design Competition

Industrial Events

Outreach

Exam File

Academic Events

Design Competition

ASMEs

- **Riverside Food Pantry**
  - Self-serve food pantry
  - Help hand out food
  - Serve hot meals

**Check the halfsheet!**

---

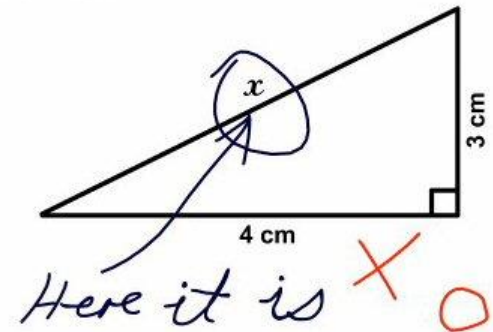
# Exam File

What's on Tap:

Membership  
Membership Requirements  
Active Member Awards  
Twitter  
T-shirts  
Design Competition  
Industrial Events  
Outreach  
Exam File  
Academic Events  
Design Competition  
ASMEs

- We **KNOW** you have exams for us!!!
  - Drop them off whenever at the office
  - We'll make copies of them and get them back to you at the next general meeting
  - Points for Active Member Award!!!
- All REGISTERED ASME members can use the exam file!
  - Visit during office hours posted on the office door

3. Find  $x$ .



# Academic Events

## What's on Tap:

Membership

Membership Requirements

Active Member Awards

Twitter

T-shirts

Design Competition

Industrial Events

Outreach

Exam File

Academic Events

Design Competition

ASMEs

- **Pizza with Professors**

- What professors would you like to meet with!? – write on the half sheet!

- **Academic Advising**

- Meet with upperclassmen for advise on classes and professors! (And get some free SNACKS!!!)
- Date: NEXT Tuesday - Nov. 15<sup>th</sup> at 6:15 pm  
1045 ECB

**CHECK THE HALFSHEETS!**

---



# ***DESIGN COMPETITION!***

***By: Jackson and Greg***

---

# ASME'S

BADGERS.

Daylight Savings = +1 SLEEP

Four person design team!

Free Outback Prime Rib

Design Concepts OHH YEA!

Classic Mike Behling back for the weekend. (Former ASME President)

Packers undefeated!

---