



UNIVERSITY OF WISCONSIN - MADISON

ASME

AMERICAN SOCIETY OF MECHANICAL ENGINEERS

WELCOME!

**PLEASE SIT IN THE
CENTER OF THE ROOM**



Welcome to ASME

What's on Tap:

- Membership
- Elections
- Fundraising
- Food Pantry
- Brewer Game
- Trek Tour
- Group Activities
- Spring Banquet
- Tailgate
- Social Activity
- Exam File
- Bechtel
- ASMEs
- Membership Giveaway



Tuesday, April 5th, 2011



Nick Malahy

Membership

- Become a member!
 - Looks good on resumes
 - Meet classmates for homework
 - Fun activities
 - Exam File
- Link through the UW-Madison ASME website
- www.engr.wisc.edu/studentorgs/asme
- FREE for freshmen!!!
- Only \$25 for sophomores through seniors
- Membership Giveaway

What's on Tap:

Membership

Elections

Fundraising

Food Pantry

Brewer Game

Trek Tour

Group Activities

Spring Banquet

Tailgate

Social Activity

Exam File

Bechtel

ASMEs

Membership Giveaway

SPRING 2011 ASME ELECTIONS

- ✘ Elections will take place at the next general meeting 4/19
- ✘ Ways to nominate yourself/someone else:
 - + Write on the list on the ASME door in ECB
 - + At the election meeting
 - + Email Adriana
- ✘ Speak about yourself during elections for 30 seconds and send a slide (optional) about yourself to: ascheiner@wisc.edu

SPRING 2011 ASME ELECTIONS

Year Positions for 2011-2012

- **Chair** - Responsible for the organization and successful operation of the student section, organize and run general meetings
- **Vice Chair** - Responsible for the other officers. In charge of business meetings and maintenance duties including office hours, contact info, calendar planning
- **Treasurer** - Maintain financial accounts, approve budget, authorize purchases, writing checks for events, and update reports.
- **Industrial Relations Co-Chair** - Gain support from industry for ASME activities through plant trips, speakers, seminars, financial sponsorship and scholarships.
- **Banquet Chair** - Organizes and runs the Fall Initiation Banquet and the Spring Awards Banquet.
- **Contest Chair** - Organize students to create a contest design for fall regional conference

SPRING 2011 ASME ELECTIONS

Semester Positions for Fall 2011

- × **Publicity Chair** – Make flyers, send emails, organize “The Lobby”
- × **Conference Chair** - Organize plans for Fall or Spring Conference
- × **Polygon Representative** – Attend polygon meetings as ASME rep
- × **Membership Chair** – Recruit members, collect half sheet information after general meetings
- × **Academic Chair** – Maintain exam file, organize pizza with professors and advising events
- × **Outreach Chair** – Plan activities with students and the community
- × **Fundraising Chair** – Organize events to raise money for ASME activities throughout the semester
- × **Historian Chair** – Take pictures at each ASME event
- × **Programming Chair** – Order food and drinks for events and general meetings
- × **Regional Liason** – Maintain contact/organize events with alumni
- × **Social Chair** – Organize social gatherings, (tailgates in fall semester)
- × **Webmaster** – Manage ASME website

Qdoba Fundraiser

- Qdoba on Park St.
- Help ASME raise money
- Eat cheap Qdoba!

What's on Tap:

Membership
Elections
Fundraising
Food Pantry
Brewer Game
Trek Tour
Group Activities
Spring Banquet
Tailgate
Social Activity
Exam File
Bechtel
ASMEs
Membership Giveaway





Nawaf Al-Baghly

Riverside Food Pantry

- Friday, April 15th, 5-8pm
- Help the Madison community
- Check the half sheet!!!

What's on Tap:

Membership

Elections

Fundraising

Food Pantry

Brewer Game

Trek Tour

Group Activities

Spring Banquet

Tailgate

Social Activity

Exam File

Bechtel

ASMEs

Membership Giveaway



Michael Szewczyk

Brewer Game

- Friday April 22nd against Houston
- \$20 for tickets, transportation and food
- Sprecher Brewery tour on the way!!!
 - Soda available for under-agers

What's on Tap:

- Membership
- Elections
- Fundraising
- Food Pantry
- Brewer Game
- Trek Tour
- Group Activities
- Spring Banquet
- Tailgate
- Social Activity
- Exam File
- Bechtel
- ASMEs
- Membership Giveaway





Michael Szewczyk

Trek Tour

- Friday, April 29
- Check the half sheet!!!

What's on Tap:

- Membership
- Elections
- Fundraising
- Food Pantry
- Brewer Game
- Trek Tour
- Group Activities
- Spring Banquet
- Tailgate
- Social Activity
- Exam File
- Bechtel
- ASMEs
- Membership Giveaway





Mark Trader

GE Info Session

- Tomorrow, April 6th
- 6:30-7:30 2317 EH
- Learn about wind turbine technology and Field Service Engineer positions
- Free food!!!

What's on Tap:

- Membership
- Elections
- Fundraising
- Food Pantry
- Brewer Game
- Trek Tour
- Group Activities
- Spring Banquet
- Tailgate
- Social Activity
- Exam File
- Bechtel
- ASMEs
- Membership Giveaway

GE Energy





DOUBLE HOT BOX

- This week in the DOUBLE HOT BOX:
 - Zach Gaertner
 - Allison Mahvi
 - Mark Gavin
 - Eric Lembach

What's on Tap:

Membership
Elections
Fundraising
Food Pantry
Brewer Game
Trek Tour
Group Activities
Spring Banquet
Tailgate
Social Activity
Exam File
Bechtel
ASMEs
Membership Giveaway





Eric Lembach

Spring Banquet

- Monday May 2nd, 6-7:30 pm
- New Union South
- Honor outstanding ASME members
- \$5-10 for dinner
- Check the half-sheet!!!

What's on Tap:

- Membership
- Elections
- Fundraising
- Food Pantry
- Brewer Game
- Trek Tour
- Group Activities
- Spring Banquet
- Tailgate
- Social Activity
- Exam File
- Bechtel
- ASMEs
- Membership Giveaway





Adam Ringstad

Spring Game Tailgate

- Saturday, April 23rd
- 12 Lathrop Street

What's on Tap:

- Membership
- Elections
- Fundraising
- Food Pantry
- Brewer Game
- Trek Tour
- Group Activities
- Spring Banquet
- Tailgate
- Social Activity
- Exam File
- Bechtel
- ASMEs
- Membership Giveaway





Adam Ringstad

Laser Tag/Mini Golf

- Date TBD
- Get a break from studying to hang out with other ASME members
- Check the half sheet!!!

What's on Tap:

Membership
Elections
Fundraising
Food Pantry
Brewer Game
Trek Tour
Group Activities
Spring Banquet
Tailgate
Social Activity
Exam File
Bechtel
ASMEs
Membership Giveaway

Exam File

- We **KNOW** you have exams for us!!!
- Drop them off whenever at the office
- We'll make copies of them and get them back to you at the next general meeting
- Points for Active Member Award!!!

What's on Tap:

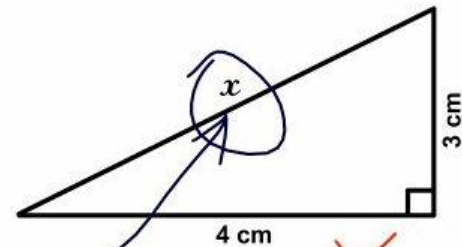
- Membership
- Elections
- Fundraising
- Food Pantry
- Brewer Game
- Trek Tour
- Group Activities
- Spring Banquet
- Tailgate
- Social Activity
- Exam File
- Bechtel
- ASMEs
- Membership Giveaway

$$\frac{1}{n} \sin x = ?$$

$$\frac{1}{n} \sin x =$$

$$six = 6$$

3. Find x.



Here it is ~~X~~ 0



What's on Tap:

- Membership
- Elections
- Fundraising
- Food Pantry
- Brewer Game
- Trek Tour
- Group Activities
- Spring Banquet
- Tailgate
- Social Activity
- Exam File
- Bechtel
- ASMEs
- Membership Giveaway

<http://www.bechtel.com/>



UNIVERSITY OF WISCONSIN - MADISON

ASME

AMERICAN SOCIETY OF MECHANICAL ENGINEERS

ASME's

- Nice Weather!
- CEREAL!!!
- Dubstep Acapella
- Costume parties
- UCONN



Membership Giveaway

