



WELCOME!!

**Please take a seat in the
center of the room!**



***Welcome to ASME's
Spring Semester Kickoff!***



Meet the officers!



Icebreaker

Membership

What's on Tap:

Membership
Design Competition
Outreach Events
Fundraising
Spring Conference
Career Fair
Exam File
Sub Zero

- Become a member!
 - Looks good on resumes
 - Meet classmates for homework
 - Fun activities
 - Exam File
 - Link through the UW-Madison ASME website
 - www.engr.wisc.edu/studentorgs/asme
 - FREE for freshmen!!!
 - Only \$25 for sophomores through seniors
 - Membership Giveaway
-

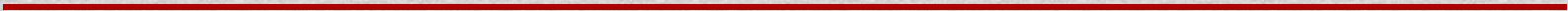
*Greg Smetana and
Jackson Cryns*

Design Competition

What's on Tap:

Membership
Design Competition
Outreach Events
Fundraising
Spring Conference
Career Fair
Exam File
Sub Zero

- Design meetings after General Meetings!
 - First one TONIGHT!!
- Check the half-sheet if interested (even if you can't make the meeting!)



Outreach Events

What's on Tap:

Membership

Design Competition

Outreach Events

Fundraising

Spring Conference

Career Fair

Exam File

Sub Zero

- Riverside Food Pantry
 - Once a month!!
 - Fridays from 4:30-8:30
 - First Pantry session is THIS Friday, 1/27
- High school Robotics Team
 - Design Reviews
 - Volunteer at competition

Check the halfsheet

Hilary

T-Shirts

What's on Tap:

Membership

Design Competition

Outreach Events

Fundraising

Spring Conference

Career Fair

Exam File

Sub Zero

- THEY ARE HERE!!!!
- \$15 for a shirt
 - Pay in cash or check made out to ASME

Spring Conference

- March 29th-30th @ University of Missouri
 - Opportunity for ALL students, not only officers!
- Competitions (win \$\$\$!!) include:
 - Oral Presentation
 - Technical Poster
 - Technical Web Page Design
 - Design Competition
- Compete (or don't) and also gain leadership tools, network with other students, listen to keynote speakers, and have an AWESOME time!!

What's on Tap:

Membership
Design Competition
Outreach Events
Fundraising
Spring Conference
Career Fair
Exam File
Sub Zero

Academics

- Career Fair!!!
 - Monday Feb. 6th and Wednesday Feb. 8th
 - Get your resume on a CD for ASME!
 - Email to Trent Thomas by 2/1/11 (Next week Wednesday)
 - tmthomas4@wisc.edu
- Lynda.com

What's on Tap:

Membership

Design Competition

Outreach Events

Fundraising

Spring Conference

Career Fair

Exam File

Sub Zero

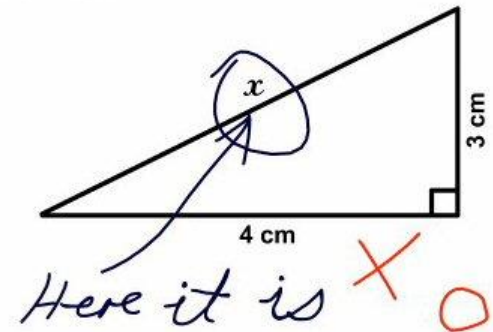
Exam File

What's on Tap:

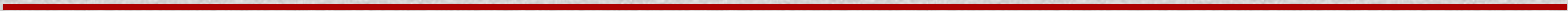
- Membership
- Design Competition
- Outreach Events
- Fundraising
- Spring Conference
- Career Fair
- Exam File
- Sub Zero

- We **KNOW** you have exams for us!!!
 - Drop them off whenever at the office
 - We'll make copies of them and get them back to you at the next general meeting
 - Points for Active Member Award!!!
- All REGISTERED ASME members can use the exam file!
 - Visit during office hours posted on the office door

3. Find x .



WELCOME!



ASME's
